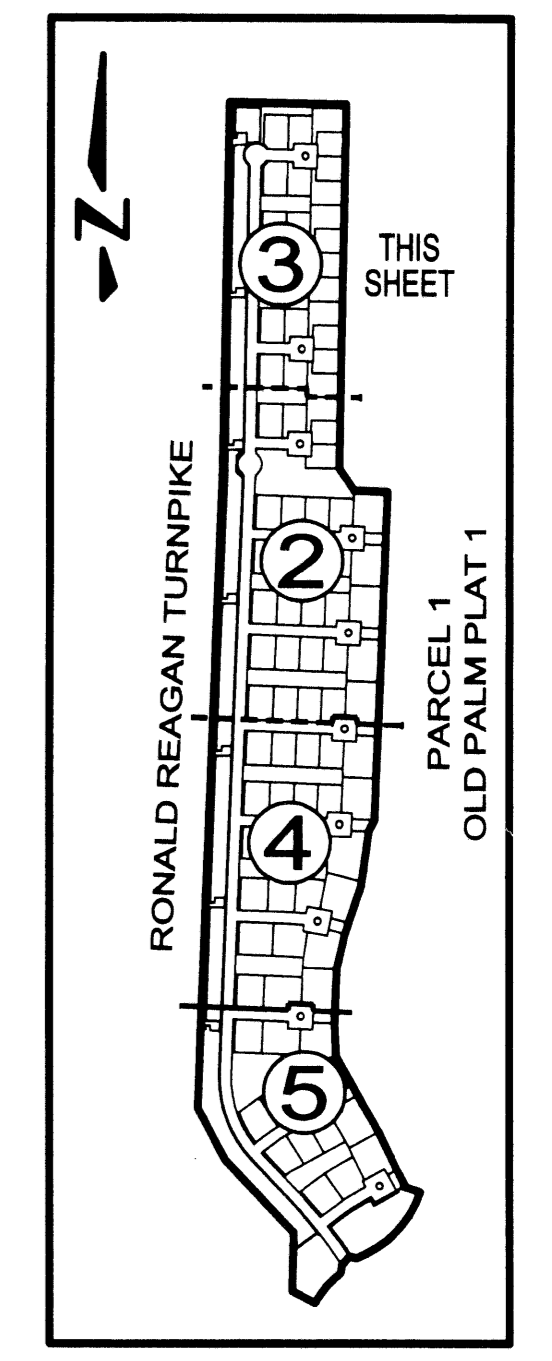
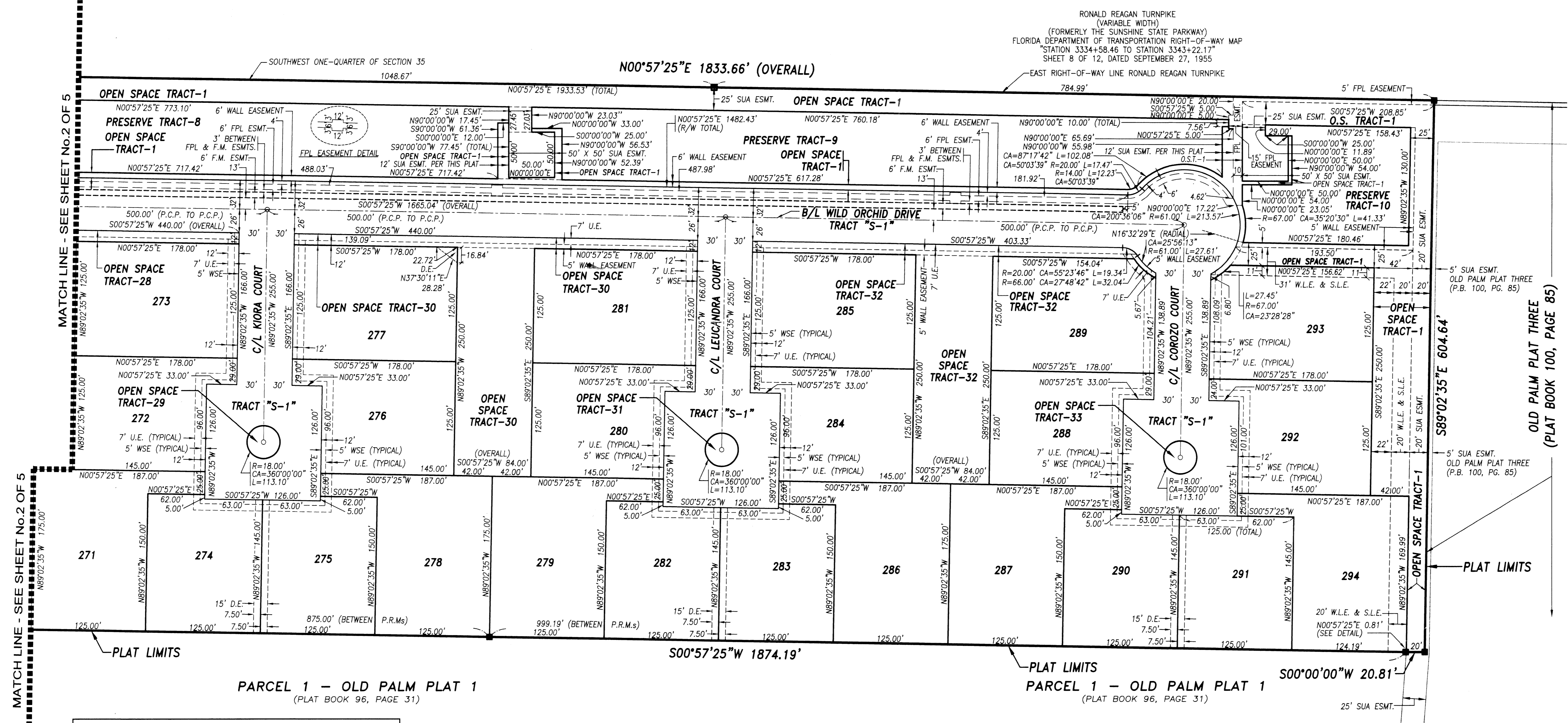
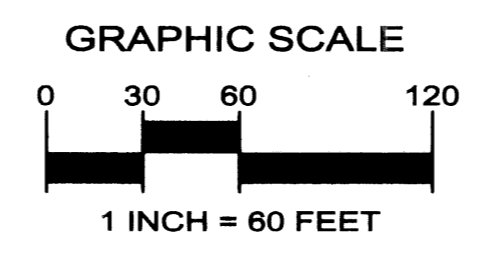


OLD PALM PLAT FOUR

A REPLAT OF A PORTION OF PARCEL 1, OLD PALM PLAT 1 AS RECORDED IN
 PLAT BOOK 96, PAGES 31 THROUGH 34, PUBLIC RECORDS OF PALM BEACH COUNTY, FLORIDA
 LYING IN THE SOUTHWEST ONE-QUARTER OF SECTION 35, TOWNSHIP 41 SOUTH, RANGE 42 EAST, AND
 THE WEST ONE-HALF OF SECTION 2, TOWNSHIP 42 SOUTH, RANGE 42 EAST
 CITY OF PALM BEACH GARDENS, PALM BEACH COUNTY, FLORIDA
 SHEET No.3 OF 5 FEBRUARY 2004

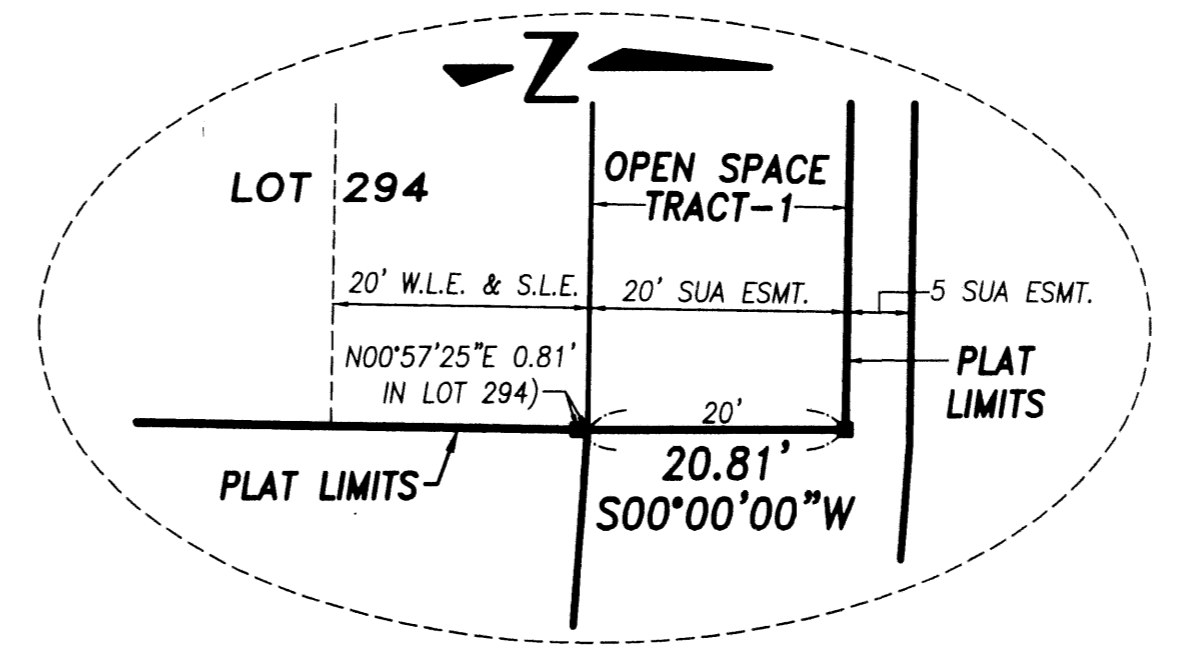


INDEX SHEET MAP
NOT TO SCALE

SYMBOLS LEGEND

■	SET PERMANENT REFERENCE MONUMENT (P.R.M.) "L.B.4897"
○	PERMANENT CONTROL POINT (P.C.P.)
D	UTILITY EASEMENT
D.R.E.	DRAINAGE EASEMENT
W.L.E.	WATER LINE EASEMENT
S.L.E.	SEWER LINE EASEMENT
WSE	WATER AND SEWER EASEMENT
SUA	SEACOAST UTILITY AUTHORITY
SUA ESMT.	SEACOAST UTILITY AUTHORITY EASEMENT
F.M.	FORCE MAIN
F.P.L.	FLORIDA POWER AND LIGHT
O.R.B.	OFFICIAL RECORD BOOK
P.G.	PAGE
R/W	RIGHT-OF-WAY
C/L	CENTERLINE
O.S.T.	OPEN SPACE TRACT
INT	INTERSECTION
B/L	BASELINE
+	CHANGE IN DIRECTION
P.S.M.	PROFESSIONAL SURVEYOR AND MAPPER
P.C.P.	PERMANENT CONTROL POINT
□	FOUND PERMANENT REFERENCE MONUMENT (P.R.M.) "L.B.4431"
	R RADIUS
	CA CENTRAL ANGLE
	L ARC LENGTH
	CHB CHORD BEARING
	CH CHORD
	ESMT. EASEMENT

NOTE: THE SUA EASEMENTS SHOWN HEREON, (UNLESS OTHERWISE NOTED) ARE AS DESCRIBED IN OFFICIAL RECORD BOOK 16089, PAGE 1938 OF THE PUBLIC RECORDS OF PALM BEACH COUNTY, FLORIDA.



DETAIL OF THE NORTHEAST
CORNER OF LOT 294
NOT TO SCALE



Keshavarz & Associates, Inc.
 CONSULTING ENGINEERS - SURVEYORS
 711 N. Dixie Highway, Suite 201
 West Palm Beach, Florida 33401
 Tel: (561) 689-9600 Fax: (561) 689-7476 LB 4897
 THIS INSTRUMENT WAS PREPARED BY MICHAEL K. HORAN SR., PSM
 PROFESSIONAL SURVEYOR AND MAPPER NO. 5494
 IN THE OFFICES OF KESHAVARZ & ASSOCIATES, INC.
 \\Kai\SU\770_OLDPALM_PL4\dwg\770_PLAT_FOUR.dwg 3/1/2004 10:35:48 AM EST